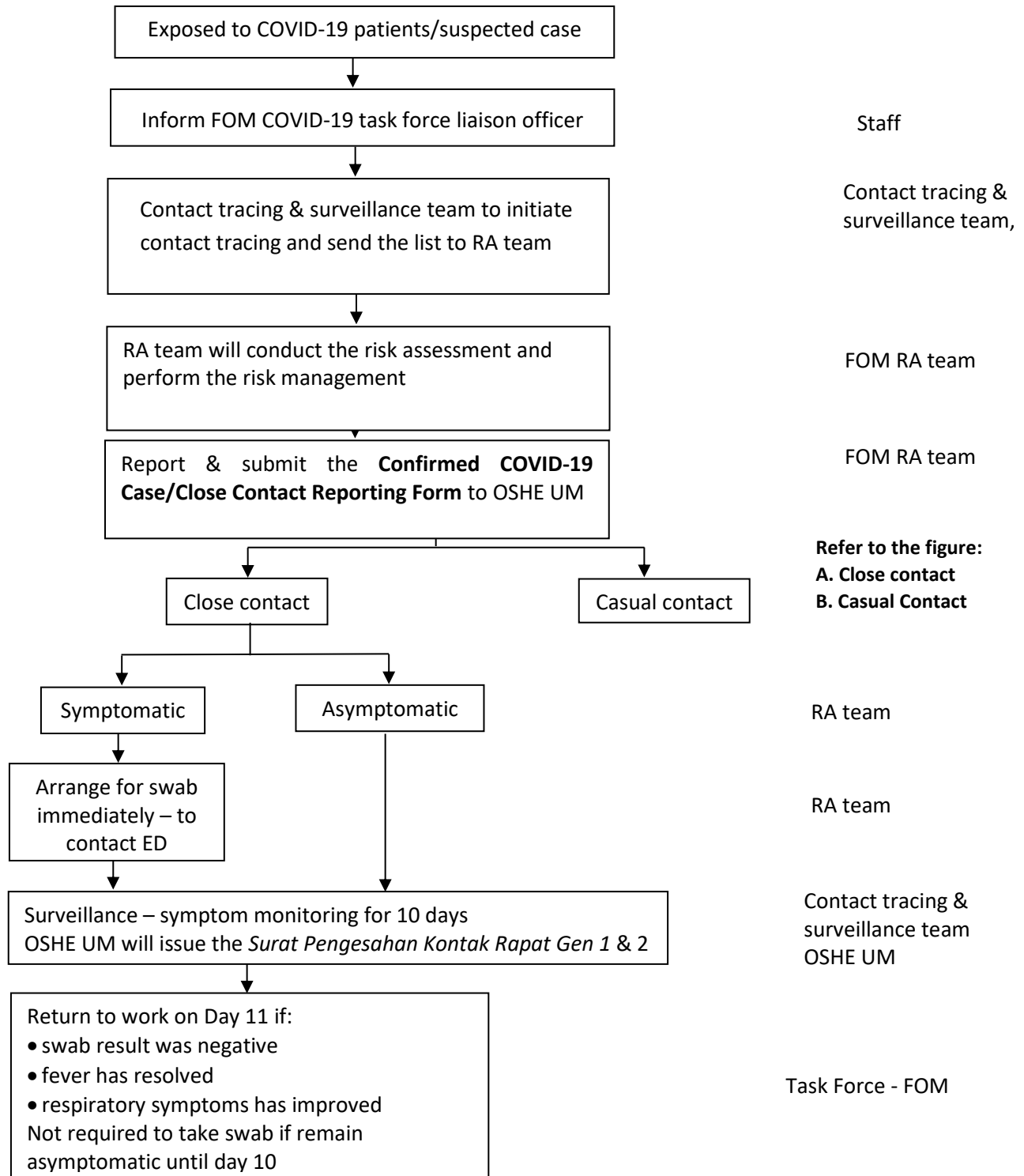
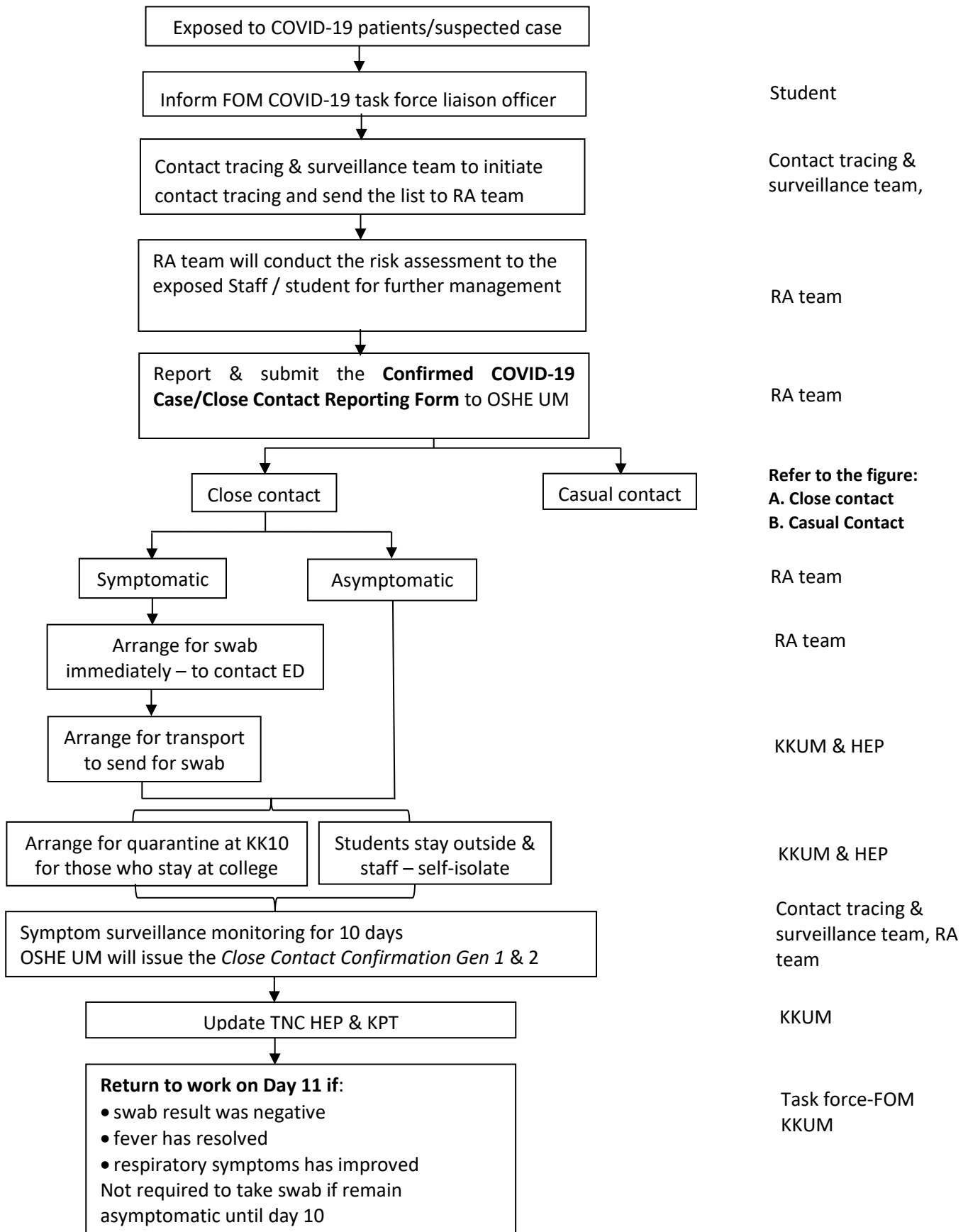


MANAGEMENT OF NON-CLINICAL STAFF & STUDENT EXPOSED TO COVID 19 PATIENT FACULTY OF MEDICINE

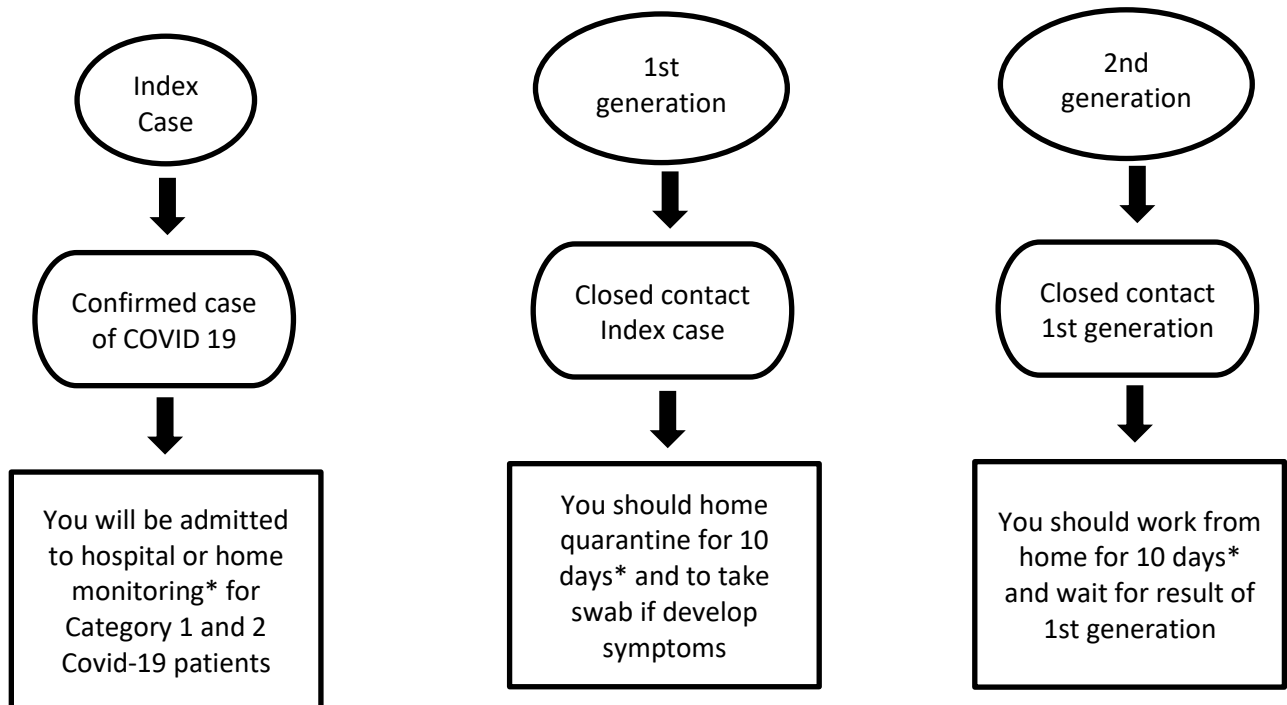
A. FLOW CHART FOR NON-CLINICAL STAFF



B. FLOW CHART FOR NON CLINICAL STUDENT



C. MANAGEMENT OF CLOSE CONTACT



* Lampiran 2: Cuti/ Pelepasan Berkaitan Individu Dalam Rantaian Covid-19

D. CASE DEFINITION

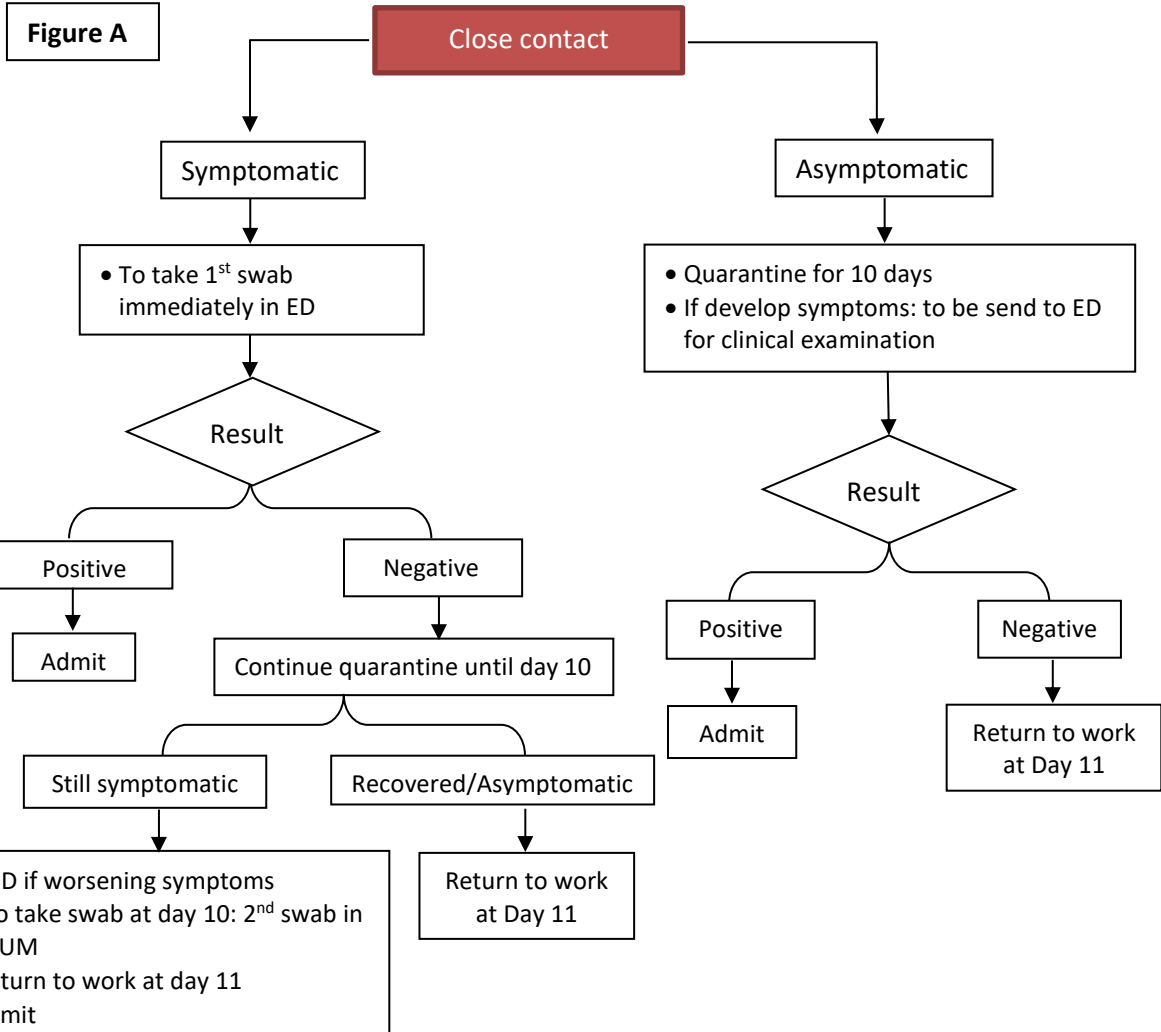
1. CLOSE CONTACT

- Unprotected contact, spending more than 15 minutes of face-to-face contact within 1 metre of someone who has COVID-19, indoors or outdoors
- Unprotected contact, spending more than 2 hours in close proximity or sharing the same classroom/working environment with a COVID-19 patient
- Direct physical contact with the person (engage)
- Shared eating or drinking utensils
- The person sneezed, coughed, or somehow got respiratory droplets on you
- Traveling together with COVID-19 patient in any kind of conveyance
- Living in the same house or shared accommodation as someone who has COVID-19
- Sitting within 2 seats of someone who has COVID-19 on public transport or an airplane

2. INFECTIOUS PERIOD

- Symptoms positive COVID-19: people in contact with a symptoms positive COVID-19 patient up to 48 hours before they developed symptoms and started self-isolating
- People were in contact with asymptomatic positive COVID 19 patients up to 48 hours before they were tested positive

Refer to Annex 1: Case Definition of COVID-19, Ministry of Health, Malaysia



3. CASUAL CONTACT

A person may have been in contact with someone with COVID-19, but she/he do not meet the definition to be a close contact. If this person is a casual contact, she/he do not need to restrict their movements. If this person is a casual contact, she/he do not need to be tested.

Figure B

